

Daily Derivatives & Market Report

CONTENTS

Page No.	Particulars
2	Market Summary
3	Nifty Futures – Derivatives Snap
4	Bank Nifty Futures – Derivatives Snap
5	Activity in Nifty Options
6	What do Nifty Technical suggest
7	Derivative Analysis
8	Disclaimer

Index Trend Analysis

Pivot(Daily)	Close	R2	R1	Pivot	S1	S2	Daily	Weekly	Monthly
Nifty	9198	9275	9237	9212	9174	9150	Buy	Buy	Buy
Sensex	29707	29971	29839	29754	29621	29536	Buy	Buy	Buy
Nifty Futures	9211	9297	9254	9227	9185	9158	Buy	Buy	Buy
Bank Nifty	21431	21702	21566	21482	21346	21262	Buy	Buy	Buy
CNX IT	10486	10607	10546	10508	10448	10410	Sell	Sell	Neutral

Market Summary

Domestic Indices	Close	Points	% Chg
SENSEX	29706.6	-220.7	-0.74
NIFTY	9198.3	-63.65	-0.69
MIDCAP	14233.2	-43.38	-0.30
SMLCAP	14681.4	-69.55	-0.47
BSEFMC	9184.8	-50.02	-0.54
AUTO	22235.3	-87.28	-0.39
POWER	2297.3	-14.64	-0.63
REALTY	1684.4	-20.21	-1.19
BSE IT	10147.6	-61.23	-0.60
BANKEKX	24422.7	-236.5	-0.96
OILGAS	13959.9	67.04	0.48
METAL	11852.5	-149.2	-1.24

Currency Futures	Close	Pre. Pts	% Chg
26-Apr-16 EUR-INR	68.58	69.13	-0.81
26-apr-16 USD-INR	64.43	64.71	-0.46
26-Apr-16 GBP-INR	80.10	80.73	-0.77
26-Apr-16 JPY-INR	58.26	58.38	-0.26

Advance/ Decline	Adv	Dec	Un Ch.
NSE	647	1043	72
BSE	1277	1640	125

FII/DII Capital Mkt*	Buy	Sell	Net
FII	5082	5344	(262)
DII	3721	3306	415

*NOTE: - FII AND DII data figure is provisional

Market Commentary

Indian equity markets concluded the week on a daunting note with the benchmark indices suffering nasty lacerations of over half a percent in Friday's session. The frontline gauges failed to showcase any kind of resilience through the session and kept drifting to lower levels, to eventually settle around the psychological 9,200 (Nifty) and 29,700 (Sensex) levels. Market participants turned skittish after the United States launched cruise missiles against an air base in Syria, raising the risk of confrontation with Syrian backers Russia and Iran. Facing his biggest foreign policy crisis since taking office in January, Trump took the toughest direct U.S. action yet in Syria's six-year-old civil war. On the domestic front, sentiments were undermined as Reserve Bank of India (RBI) projected retail inflation to increase to 5% in the second half of the current fiscal citing risks of El Nino impacting the monsoon and one-off effects of the Goods and Services Tax. The central bank also said that a prominent risk could emanate from managing the implementation of the allowances recommended by the 7th Central Pay Commission (CPC).

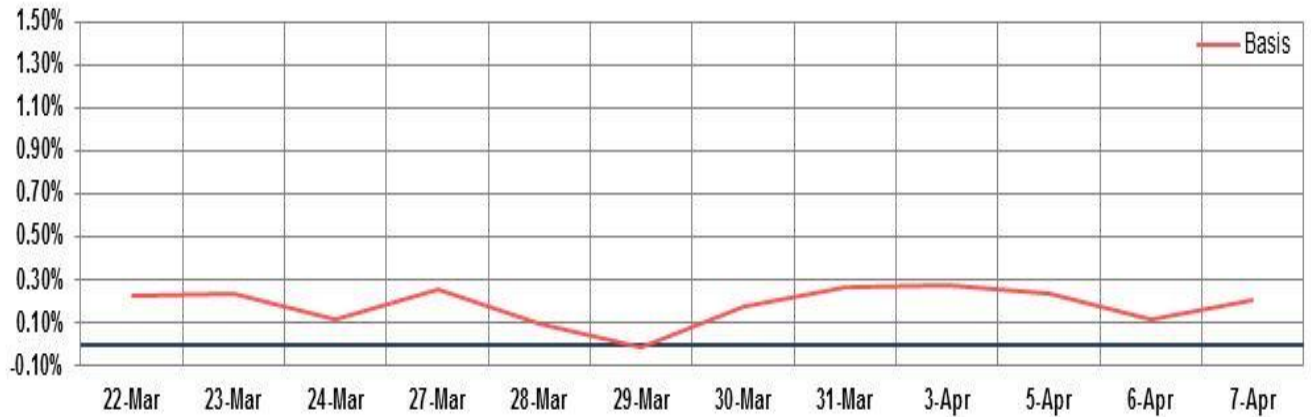
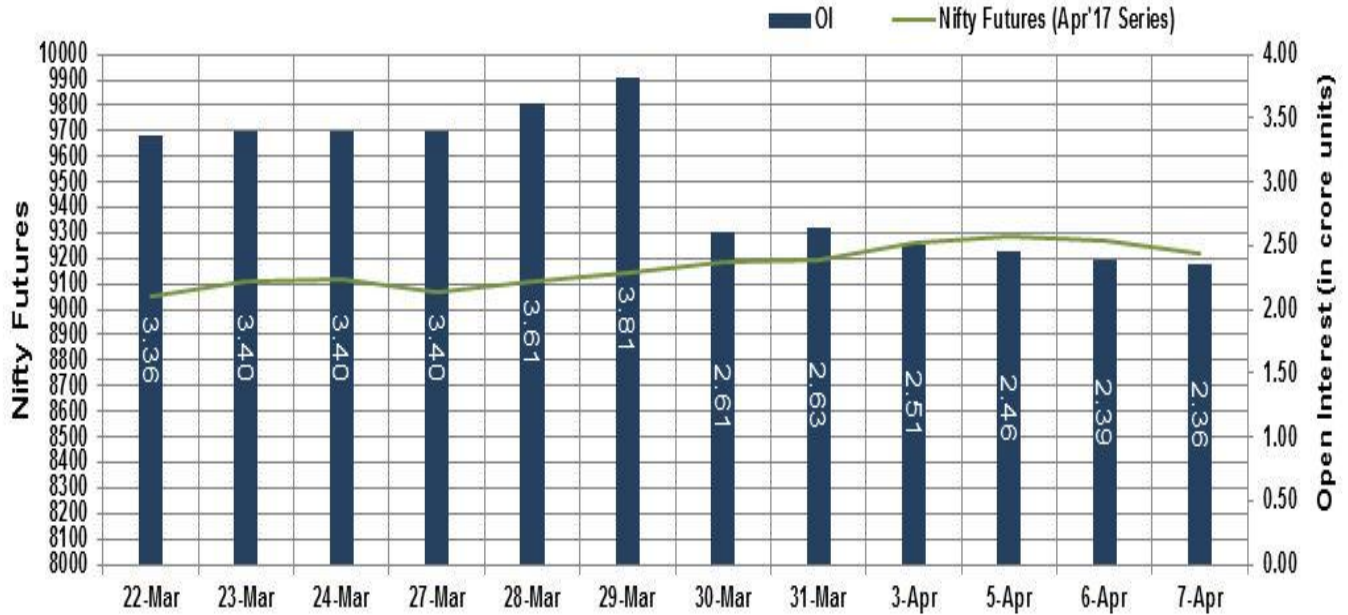
On the global front, Asian stocks ended mixed on Friday as geopolitical concerns grew after the United States launched cruise missiles against an air base in Syria. Eyes are also on Florida as Chinese President Xi Jinping and Donald Trump kicked off a two-day meeting after the US tycoon's accusations that Beijing was killing US jobs and manipulating its currency to give it a trade advantage.

Market Turnover & FII Derivative Data

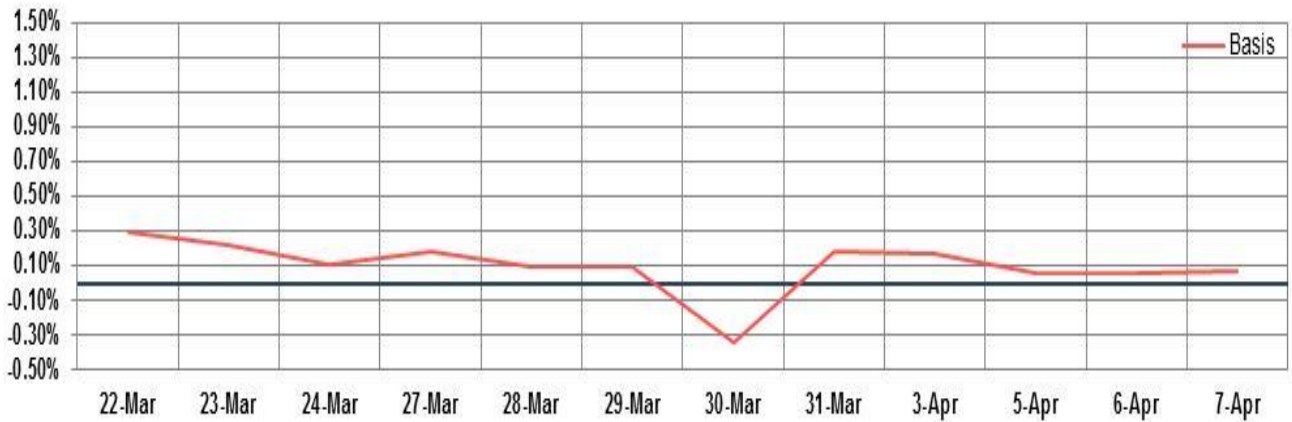
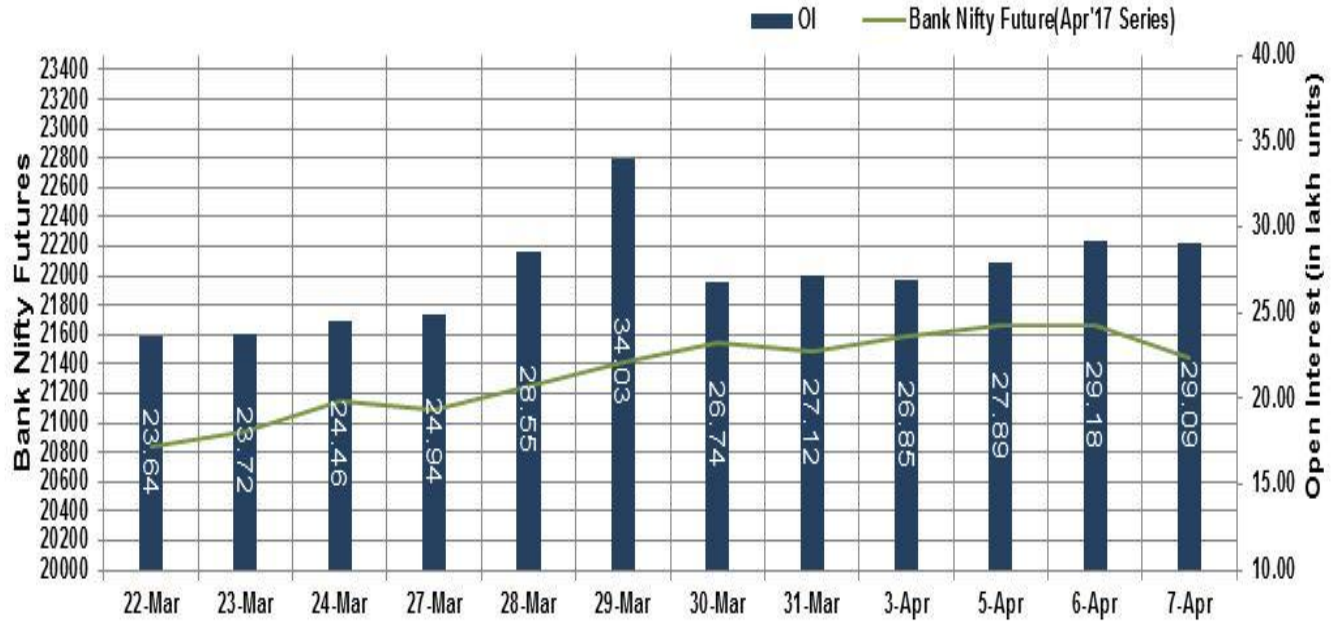
Market TO	Current	Previous	Net%
BSE CASH	4362	3601	21
NSE CASH	28156	25423	11
NSE FO	303975	640047	(53)

FII Derivatives	Buy	Sell	Net
Ind. Futures	1188	1697	(509)
Ind. Options	22937	22028	910
Stk. Futures	7050	6486	564
Stk. Options	5276	5328	(52)

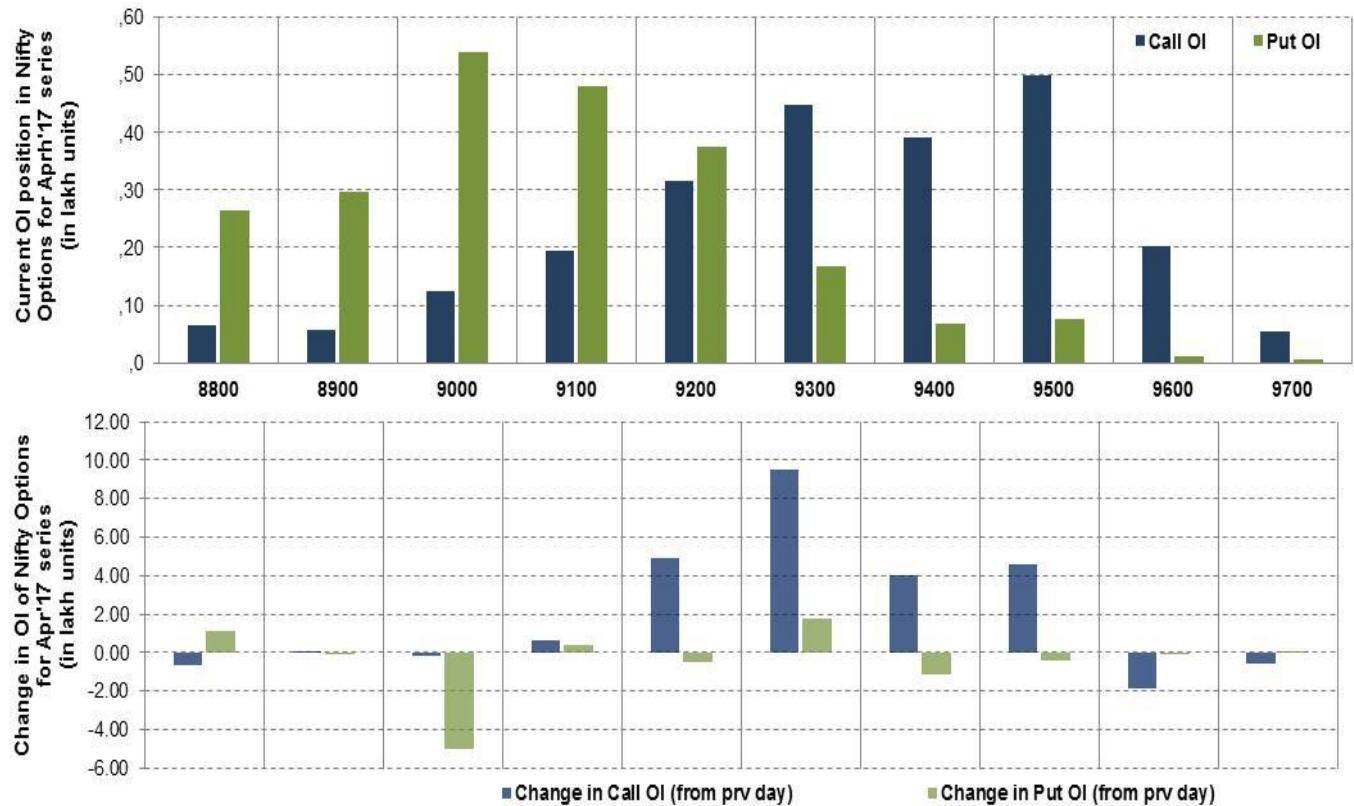
Nifty Futures



Bank Nifty Futures



Nifty Options

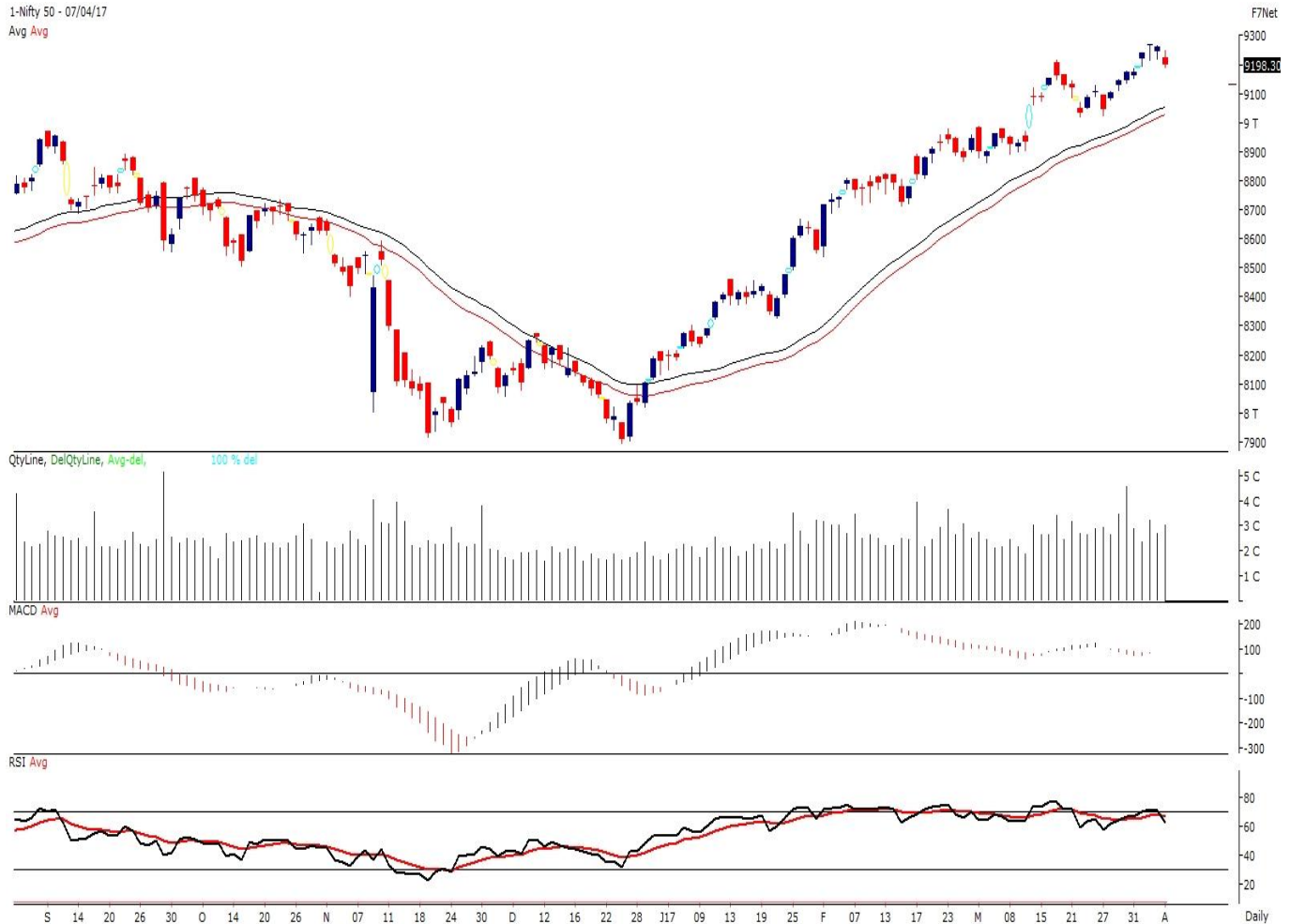


Note – Change in OI of Nifty Options refers to change from previous trading day
 Source-NSE, SIHL Derivatives Research (Institutional Equities)

- Among Nifty calls 9,500 SP from the Apr month expiry was the most active call with an addition of 0.46 million in open interest.
- Among Nifty puts, 9,000 SP from the Apr month expiry was the most active put with an addition of 0.50 million open interests.
- The maximum OI outstanding for Calls was at 9,500 SP (4.98mn) and that for Puts was at 9,000 SP (5.39mn).

Nifty Technical & Indices Levels

1-Nifty 50 - 07/04/17
 Avg Avg



Nifty Cash prices have settled at 9198.3 down by 0.69% from its previous close. On the upper side prices are likely to trade higher till 9300 and 9350 levels, while lower side it has support of 9150 and 9080 levels. Intraday traders should be cautious and take position accordingly.

Fresh Longs ↑ Open Interest ↑ Price					
Script	Prev. OI	Cur. OI	% Chg. OI	LTP	Price % Chg
DALMIABHA	159,900	237,900	48.78	2182.00	3.12
MFSL	3,111,000	3,901,000	25.39	640.90	5.67
PVR	185,600	231,200	24.57	1541.00	1.61
CADILAHC	3,286,400	3,878,400	18.01	456.70	1.57
Short-Covering ↓ Open Interest ↑ Price					
Script	Prev. OI	Cur. OI	% Chg. OI	LTP	Price % Chg
HDFCBANK	30,602,500	30,292,500	-1.01	1436.00	0.10
CONCOR	1,410,000	1,395,000	-1.06	1122.95	6.55
BHARATFIN	22,467,000	21,667,000	-3.56	789.50	1.58
INFIBEAM	1,491,200	1,436,000	-3.70	980.00	2.49
Fresh Shorts ↑ Open Interest ↓ Price					
Script	Prev. OI	Cur. OI	% Chg. OI	LTP	Price % Chg
UJJIVAN	4,981,200	7,569,600	51.96	384.45	-2.71
INDIANB	846,000	1,080,000	27.66	270.50	-4.16
EQUITAS	6,390,400	7,996,800	25.14	164.40	-2.69
MUTHOOTFIN	1,084,500	1,234,500	13.83	378.65	-0.84
Long Unwinding ↓ Open Interest ↓ Price					
Script	Prev. OI	Cur. OI	% Chg. OI	LTP	Price % Chg
GODREJCP	395,200	376,800	-4.66	1700.50	-0.07
DLF	35,825,000	34,110,000	-4.79	153.80	-2.16
ORIENTBANK	14,352,000	13,632,000	-5.02	140.40	-3.64
RELIANCE	15,284,500	14,504,500	-5.10	1410.90	-1.89

Disclaimer:

The Information provided by SMS or in newsletter or in any document has been prepared by Shah Investor's Home Ltd (SIHL). The Information provided by SMS or in newsletter does not constitute an offer or solicitation for the purchase or sale of any financial instrument or as an official confirmation of any transaction. The information contained herein is from publicly available data or other sources believed to be reliable, but we do not represent that it is accurate or complete and it should not be relied on as such. SIHL or any of its affiliates/ group companies shall not be in any way responsible for any loss or damage that may arise to any person from any inadvertent error in the information contained in this report or SMS. This Information provided by SMS, reports or in newsletter is provided for assistance only and is not intended to be and must not alone be taken as the basis for an investment decision. The user assumes the entire risk of any use made of this information. Each recipient of this Information provided by SMS, report or in newsletter should make such investigation as it deems necessary to arrive at an independent evaluation of an investment in the securities of companies referred to in this information provided by SMS, report or in newsletter (including the merits and risks involved), and should consult his own advisors to determine the merits and risks of such investment. The investment discussed or views expressed may not be suitable for all investors. This information is strictly confidential and is being furnished to you solely for your information.

The information should not be reproduced or redistributed or passed on directly or indirectly in any form to any other person or published, copied, in whole or in part, for any purpose. The information provided by report or SMS is not directed or intended for distribution to, or use by, any person or entity who is a citizen or resident of or located in any locality, state, country or other jurisdiction, where such distribution, publication, availability or use would be contrary to law, regulation or which would subject SIHL and affiliates/ group companies to any registration or licensing requirements within such jurisdiction. The distribution of this Information provided by SMS or in newsletter in certain jurisdictions may be restricted by law, and persons in whose possession this Information provided by SMS or in newsletter comes, should inform themselves about and observe, any such restrictions. The information given or Information provided by SMS, report or in newsletter is as of the date of the issue date of report or the date on which SMS provided and there can be no assurance that future results or events will be consistent with this information. This information is subject to change without any prior notice. SIHL reserves the right to make modifications and alterations to this statement as may be required from time to time. However, SIHL is under no obligation to update or keep the information current.

Nevertheless, SIHL is committed to providing independent and transparent recommendation to its client and would be happy to provide any information in response to specific client queries. Neither SIHL nor any of its affiliates, group companies, directors, employees, agents or representatives shall be liable for any damages whether direct, indirect, special or consequential including lost revenue or lost profits that may arise from or in connection with the use of the information. Past performance is not necessarily a guide to future performance. The disclosures of interest statements incorporated in the Information provided by SMS, report or in newsletter are provided solely to enhance the transparency and should not be treated as endorsement of the views expressed in the report. The analyst for this report certifies that all of the views expressed in this report accurately reflect his or her personal views about the subject company or companies and its or their securities, and no part of his or her compensation was, is or will be, directly or indirectly related to specific recommendations or views expressed in this report.

About Us:

Shah Investor's Home Ltd (SIHL) is an ISO 9001:2008 Certified financial Services Company established in 1994 at Ahmadabad, Gujarat. Customer satisfaction is guaranteed through our diversified product portfolio, professional management and customer first attitude. SIHL was the first broking house in Gujarat with membership in National Securities Depository Ltd (NSDL) and was the first broking name providing services in NSE F&O in Ahmedabad. Today, SIHL ranks among the top most players in Gujarat in retail stock broking area with 45 branches, 350 franchisee across India and providing service to more than 1,25,000 clients.